

# ABITAZIONI PRIVATE AD USO I.P.A.

## *Casa Romè*

Località Vindola – Comunanza (Ascoli Piceno) – Marche Region

Info & reservation: Ipa member Giacomo ODDI  
Tel. / fax: + 39 (0)736 812277 - cell. +39 347 8458750  
e-mail: [info@casarome.it](mailto:info@casarome.it) - web: [www.casarome.it](http://www.casarome.it)

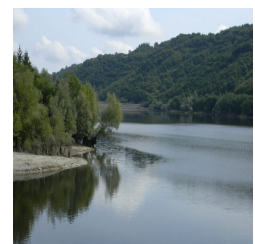
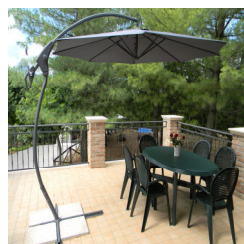
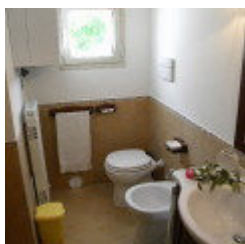
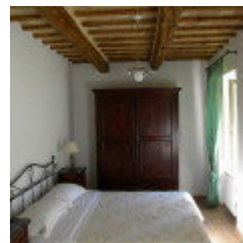
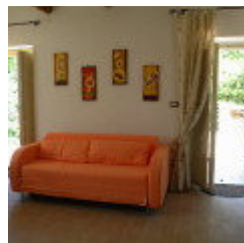
Situated in the locality of Vindola within the borough of Comunanza, with a breathtaking view of Lake Gerosa and the Sibillini Mountain chain, Casa Romè is a very old restored country house, made up of two finely furnished independent apartments and set within a fenced property. It is ideal to spend a holiday in symbiosis with nature, a place where calm, silence and unforgettable views will take you into a magic world far from the stress of everyday life.

Casa Romè is found in this unspoilt setting at about 800 m above sea level, within the rich framework of tradition, art and history that the surprising Monti Sibillini National Park offers the visitor.



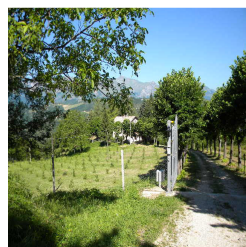
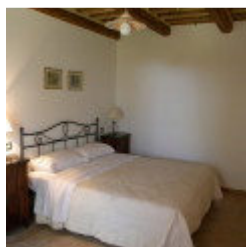
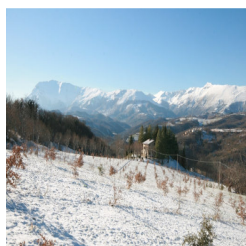
### APARTMENT 1

Kitchen with living-room with a double sofa bed, a splendid double bedroom with private bathroom, a second bathroom with shower, a large terrace.



## APARTMENT 2

Kitchen with living-room, a very nice double bedroom and two PUFF single beds, bathroom with shower.



Wood-beamed ceilings, brick floors and wrought-iron beds create an evocative and enchanting atmosphere. Each apartment is equipped with a kitchenette with dishes, fridge, oven, washing-machine, television, iron and ironing board. The bathroom has a shower and hairdryer. The large private park close to the house offers hammocks, ping pong, sun-loungers, a large gazebo and barbecue.

Nearby the house, in Casale, there is a restaurant with which we have a special agreement. There you can try the typical specialities of the area, in particular a choice of dishes based on mushrooms, truffles and wild boar. What's more, Casa Romè is situated about 10 km from Comunanza, where you can find banks, pharmacies, supermarkets and shops of every kind.

## IDEAL BASE TO EXPLORE:

### MONTEFORTINO

A winding road leads to Montefortino which, seated on the flank of a hill in the heart of the Sibillini mountains, rises up to face the imposing Monte Priora. It was the old Roman settlement, as borne witness to by numerous finds and traces. Among the monuments that stand out is the church of S. Agostino of the 13th century and the church of S. Francesco of the 15th century, situated in the highest point of the town. Set between splendid mountains, the Sanctuary of the Madonna dell'Ambro was the destination of pilgrims, built in the 11th century and rebuilt in the 17th century. Distance: about 21 Km.

### AMANDOLA

Amandola, one of the most important centres of the Sibillini, is reached after a brief journey with dazzling scenery. The old buildings and churches exemplify the cultural richness that has endured here for centuries, like the church of S. Francesco, that dates from the 13th century and houses a Romanesque crucifix and a cycle of 15th century frescoes. Distance: about 23 Km.

### MONTEMONACO

Located on the watershed between the Tenna and the Aso rivers, the Aso having its source right in the area of Foce, Montemonaco reaches an altitude of almost 1000 m. It preserves some Romanesque churches of great interest, such as the church of S. Lorenzo (11th century) in the hamlet of Vallegrascia and the church of S. Maria

in Casalicchio (14<sup>th</sup> century) in the hamlet of Tofe. The hamlet of Foce is the starting point for trips to reach the top of Mount Vettore, Lago di Pilato (Pilate's Lake) and the Sibillini Mountains. Distance: about 13 Km.

## **COMUNANZA**

Comunanza is dominated by the imposing dam of Lake Gerosa, on the banks of which rises up the valuable Romanesque church of San Giorgio all'Isola, which is entirely frescoed within. The old inhabited centre of Comunanza follows the course of the river Aso. Distance: about 13 km.

## **ASCOLI PICENO**

The town of one hundred towers, Ascoli Piceno has extremely ancient beginnings, and is an extraordinarily interesting destination. It has reached the 21<sup>st</sup> century with its medieval vestments still intact, bristling with mighty noble towers and precious noble architecture of the past. One of the most evocative corners of Ascoli Piceno is Piazza del Popolo, deemed to be the possible site of the Roman forum. Of particular merit is the Palazzo dei Capitani built in the 13<sup>th</sup> century and nearby Caffè Meletti, one of the few cafes in the Liberty style that are still to be found in Italy.

Here on the first Sunday in August the spectacular historical re-enactment of the Quintana takes place, a chivalric joust in which six knights representing the six districts of the town try to win the Palio. Distance: about 29 Km.

## **CASTELLUCCIO**

An immense plateau completely surrounded by reliefs that exceed 2000 m, where in summer it is common to see acrobatic exhibitions by enthusiast free flight. In the Piani di Castelluccio fields of lentils and wheat and meadows in full bloom divide the space up into geometric splotches of colour.

Paragliding is available, singly and in pairs. About 1 hour by car. Distance about 36 Km.

## **LAGO DI PILATO (Pilate's Lake)**

The lake is at an altitude of 1974 m and is the only glacial lake in the Apennines. Although the excursion is evocative it is also very demanding, but with suitable clothing (knee socks, walking shoes, cap, windcheater and above all, water) it is possible to appreciate the enchanting scenery that sees Lago di Pilato enclosed within the highest peaks of the Sibillini. The lake is the natural habitat of a fresh water crustacean that is unique in the world: the *Chirocephalus Marchesonii*.

Time necessary, leaving from Foce di Montemonaco: about 2.30 – 3 hours. Distance: about 23 Km.

## **GOLA DELL'INFERNACCIO**

Enclosed within the steep rocky slopes of Monte Sibilla and Monte Priora is Gola dell'Infernaccio. In the evocative natural canyon the light filters in with difficulty and the murmur of the river Tenna is heard. At a certain point you can choose to go on to the source of the river (a more demanding excursion) or climb up to the Hermitage of S. Leonardo, a small church on the peak above the gorge and that seems to be part of the imposing mountains that dominate it.

Time necessary from the car park at the source (altitude 1644 m) about 3 hours 30 minutes.

Time necessary from the car park at the Hermitage (altitude 1124 m) about one hour 30 minutes.

## **MONTE VETTORE**

At 2238 m, Mount Vettore is the highest peak in the Sibillini Mountains. On arriving at Forca di Presta, climb up slowly until you reach the mountain crest. Here the air is pure and fresh, being at an altitude of 2000 m. The excursion is demanding and requires suitable clothing, but you can stop at the Tito Zilioli refuge to rest before continuing to the mountain tops and visiting the highest peak of the Sibillini which offers a spectacular panorama.

Time necessary from Forca di Presta: about 3 hours. Distance: about 20 Km.

## **MONTE SIBILLA**

Mount Sibilla is the most mysterious mountain of the Apennines. Here the power of legend is very strong: it all started with this peak that is 2.173 m high and it is from this mountain that the entire Sibillini chain gets its name.

Starting off from the Sibilla refuge it takes about an hour and a half to reach the mountain crest where the Queen of the Fairies has always reigned through artfulness and magic. Distance: about 14 Km.

## **LAGO DI GEROSA**

This manmade lake is the destination of many fishermen and yachters: along its banks you can find numerous little beaches where you can relax in the shade of the pinewoods that skirt the lake. Near Casa Romè.

## **SAN BENEDETTO DEL TRONTO**

This is the seaside resort that has by now for many years in the March registered the highest number of tourists. The town is literally besieged by palms that infiltrate every spot. Apart from its splendid coast and beaches that have been awarded the blue flag for years, S. Benedetto is noted for the promenade to the port that bustles with life from the early hours of the morning around the Fishing Museum. Distance: about 64 Km.

## **NORCIA**

This small town was already inhabited in prehistoric times and is known for being the birthplace of St. Benedetto, born here fifteen centuries ago. The Basilica dedicated to the Saint is assuredly the main monument in Norcia.

The historic centre with its ancient buildings is very evocative, but don't miss out on the gastronomic specialities of the town; the renowned Norcia delicacies full of pork and wild boar salami, then black truffle, a peculiarity of this territory, very rare but much sought after. You can go horse riding, do soft air, archery, survivor (contact Giuseppe Fasulo) and also characteristic donkey hikes. If you like adventure, you can book rafting descents that can be combined with an adventure camp (for info and reservations call Giuliano on 338-7678308 or Angelisa on 348-7356565). Distance: about 53 Km.

## **COSTS :**

### **Apartment 1 – sleeps 4 adults - with terrace**

**AUGUST - at last 1 week**

EURO 35 PER PERSON PER NIGHT

Children under 8 euro 15 per night

**JULY - at last 1 week**

EURO 30 PER PERSON PER NIGHT

Children under 8 euro 15 per night

**SEPT/OCT/NOV/DEC/JAN/FEB/  
MAR/APR/MAY/JUN**

EURO 25 PER PERSON PER NIGHT

Children under 8 euro 10 per night

### **Apartment 2 – sleeps 2+2 children**

**AUGUST - at last 1 week**

EURO 30 PER PERSON PER NIGHT

Children under 8 euro 15 per night

**JULY - at last 1 week**

EURO 25 PER PERSON PER NIGHT

Children under 8 euro 10 per night

**SEPT/OCT/NOV/DEC/JAN/FEB/  
MAR/APR/MAY/JUN**

EURO 25 PER PERSON PER NIGHT

Children under 8 euro 10 per night

### **WEEK-END - at least 2 nights**

EURO 30 PER PERSON PER NIGHT

Children under 8 euro 10 per night

The weekly rates go from Saturday to Saturday with arrivals at h. 04.00 p.m. and departures at h. 10.00 a.m. and include: bed linen, towels and consumption of water, electricity and gas.

Heating in autumn-winter season: € 20 per day per apartment.

Final cleaning (compulsory) € 30.

Pets accepted. Extra fee € 20 per week.

€ 200 required at booking.

Caution: on arrival a caution of 200 Euro must be paid. This will be refunded at the end of your stay following a check of the apartment and its contents.

Payment: balance on arrival, on receipt of the keys of the apartment.

Check in: before 16:00, at the ROME' cottage.

Check out: before 10:00, once our staff have checked the apartment.

The number of people must not exceed the number that the apartment can hold: no additional people are accepted under any circumstances.

On public holidays (Easter - Christmas - New Year and longer week-ends, please contact the House Manager.